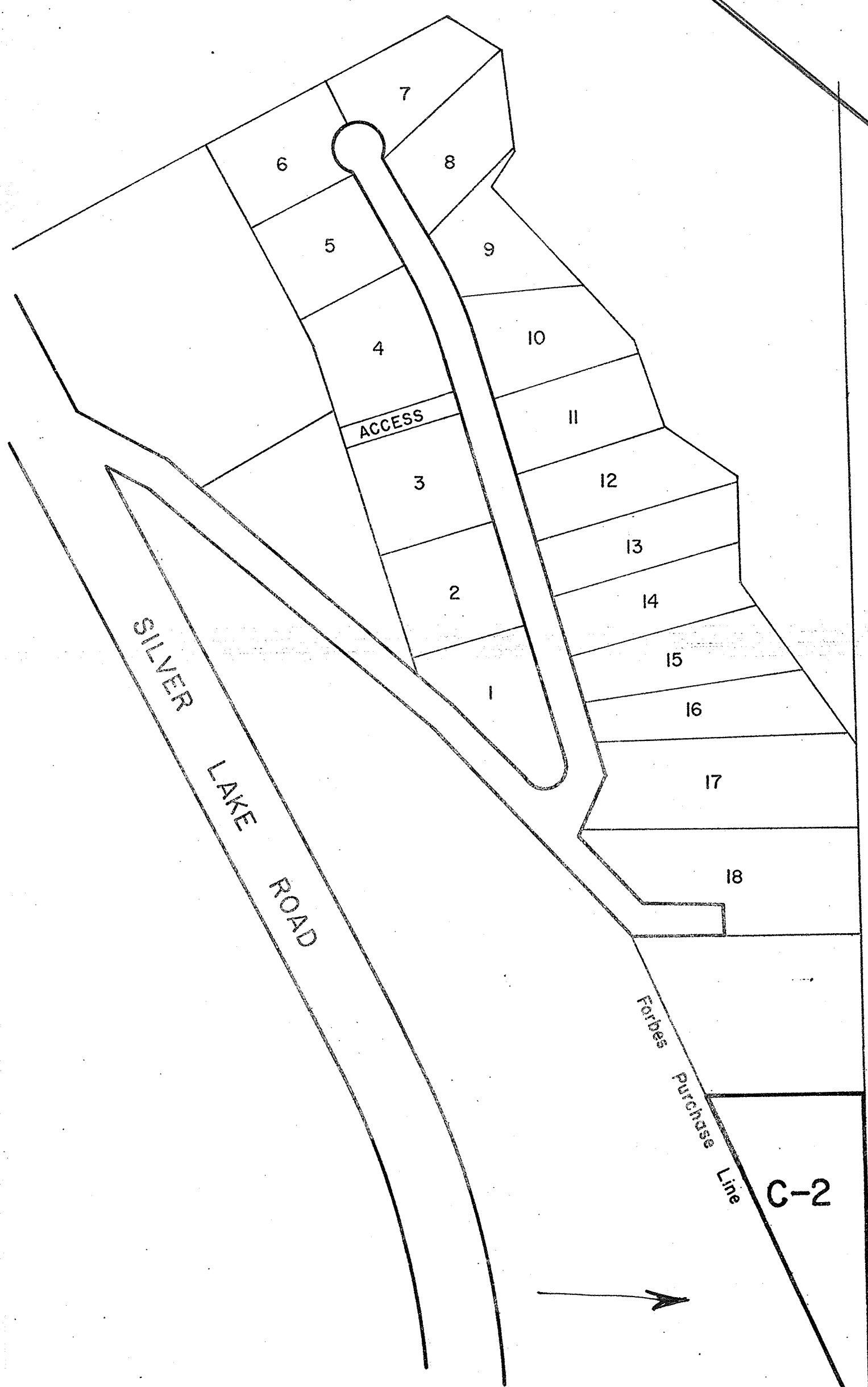


A-1

A-2

42-02-20-608-0000

8-0000



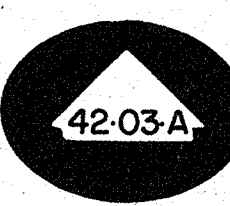
SCALE: 1" = 100'  
Detail of SE 1/4 of NE 1/4 of 3, 1S 2W

This map has been compiled from the most authentic information available. The Leon County Property Appraisers Office is not responsible for any omission or errors contained hereon.

REVISIONS	
DATE	BY

LEON COUNTY, FLORIDA  
C.C. "DICK" BRAND, JR.  
PROPERTY APPRAISER  
SCALE: 1" = 100'

SECTION: NE 1/4 OF SEC 3  
TOWNSHIP: 1S  
RANGE: 2W



42-02-20-206-0000

1041.42

